

L-BOXX®

Produktdatenblatt
Product data sheet



L-BOXX 238





Allgemeine Daten

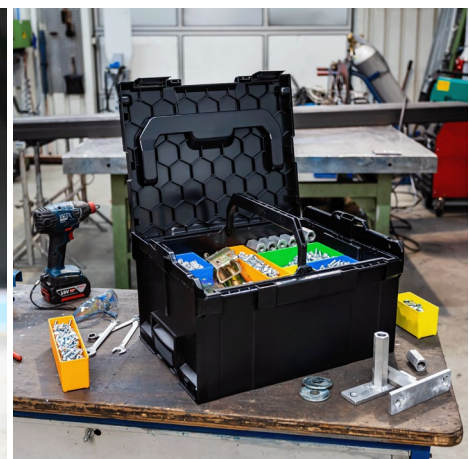
| | |
|-----------------|---------------|
| Bezeichnung | L-BOXX 238 |
| Artikelnummer | 6100000307 |
| GTIN/EAN | 4045294844578 |
| Zolltarifnummer | 39231090 |
| Ursprungsland | Deutschland |

Produktabbildung

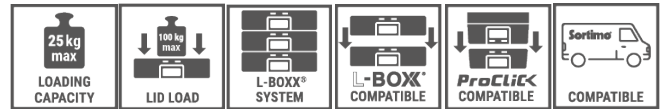


Produktbeschreibung

- Werkzeugkoffer aus Kunststoff für übersichtliches Aufbewahren und Schutz beim Transport
- Einzigartiges Mobilitätssystem
- Patentierte Klickverbindung
- Modularer Innenraum
- Ordentlich Aufbewahren
- Sicherer Transport
- Integration in die Fahrzeugeinrichtungssysteme namhafter Hersteller



Revision 5_0_08_2023



Farbe / Material

Farbe RAL 9017 Verkehrsschwarz
RAL 7016 Anthrazitgrau

Material

- L-BOXX Acrylnitril-Butadien-Styrol
- Tragegriffe Acrylnitril-Butadien-Styrol
- Griffleiste Acrylnitril-Butadien-Styrol
- Griffschale Acrylnitril-Butadien-Styrol

- Koppelhebel Polyamid
- Verschlusschnapper Polyamid

Technische Daten

Außenmaße

| | |
|--------|--------|
| Breite | 445 mm |
| Tiefe | 358 mm |
| Höhe | 254 mm |

Innenmaße

| | |
|--------|--------|
| Breite | 378 mm |
| Tiefe | 303 mm |
| Höhe | 203 mm |

| | |
|------------------------|---|
| Volumen | 25,5 l |
| Eigengewicht | 2,8 kg |
| Belastbarkeit Deckel | 100 kg |
| Beladungskapazität | 25 kg |
| Traglast Frontgriff | 25 kg |
| Traglast Tragegriff | 40 kg |
| Spritzwassergeschützt | ja |
| Temperaturbereich in C | -20°C bis +80°C |
| Kompatibel mit | <ul style="list-style-type: none"> ▪ L-BOXX System ▪ ProClick Tool Bag M ▪ ProClick Soft Bag M |
| Zertifikate | REACH-(EG 1907/2006) |



- 1 Korpus
- 2 Deckel
- 3 Tragegriff
- 4 Griffleiste
- 5 Griffschale
- 6 Koppelhebel
- 7 Verschlusschnapper



General information

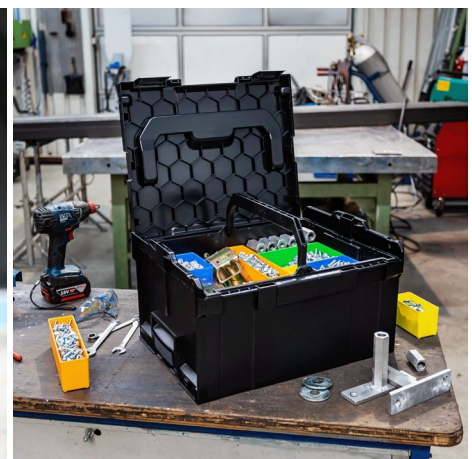
| | |
|--------------------|---------------|
| Product name | L-BOXX 238 |
| Item no. | 6100000307 |
| GTIN/EAN | 4045294844578 |
| Customs tariff no. | 39231090 |
| Country of origin | Germany |

Product image

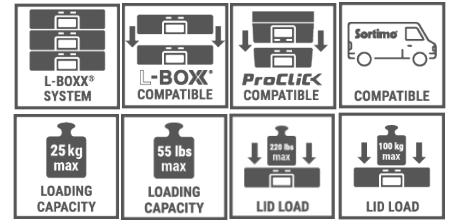


Characteristics

- Tool case made of plastic for clear storage and protection during transport
- Unique mobility system
- Patented click connection
- Modular interior
- Organized storage
- Safe transport
- Integration into the in-vehicle equipment systems of renowned manufacturers



Revision 5_01_08_2023

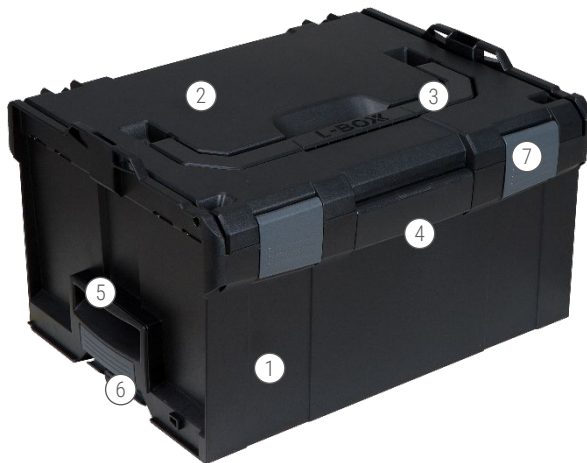


Colour / Material

Colour RAL 9017 traffic black
RAL 7016 anthracit grey

Material

- L-BOXX Acrylnitrile butadiene styrene
 - Handle rail Acrylnitrile butadiene styrene
 - Top handle Acrylnitrile butadiene styrene
 - Grip handle Acrylnitrile butadiene styrene
-
- Coupling latches Polyamide
 - Locking latches Polyamide



- 1 Body
- 2 Lid
- 3 Top handle
- 4 Handle rail
- 5 Grip handle
- 6 Coupling latches
- 7 Locking latches

Technical data

External dimensions

| | | |
|--------|--------|-------|
| Width | 445 mm | 17.5" |
| Depth | 358 mm | 14.1" |
| Height | 254 mm | 10.0" |

Internal dimensions

| | | |
|--------|--------|-------|
| Width | 378 mm | 14.9" |
| Depth | 303 mm | 11.9" |
| Height | 203 mm | 8.0" |

| | | |
|----------------------------|--------|---------|
| Volume | 25.5 l | 6.7 gal |
| Weight | 2.8 kg | 6.2 lbs |
| Load capacity lid up to | 100 kg | 220 lbs |
| Loading capacity max. | 25 kg | 55 lbs |
| Load capacity front handle | 25 kg | 55 lbs |
| Load capacity top handle | 40 kg | 88 lbs |

| | |
|-------------------------|------------------|
| Splash-proof | yes |
| Temperature range in °C | -20°C till +80°C |
| Temperature range in °F | -4°F till +176°F |

| | |
|-----------------|---|
| Compatible with | <ul style="list-style-type: none"> ▪ L-BOXX System ▪ ProClick Tool Bag M ▪ ProClick Soft Bag M |
|-----------------|---|

| | |
|--------------|----------------------|
| Certificates | REACH-(EG 1907/2006) |
|--------------|----------------------|