

Operator name and signature: Rolf Ugilt *Rolf Ugilt*

Output:	6008 lm
Peak:	2254 cd
Lux@50cm:	9018 Lux
Power:	40,3 W
Power Factor / DF ϕ 1:	0,9
Standby power	0,96 W

Light efficacy:

149 Lumen/Watt

Light quality:

CRI: 80,8

Color temperature:

6097 K



According to regulation (EU) 2019/2015

Directionality:	Directional
Useful Lumen:	5878 lm
Energy Class:	C
η TM - Efficacy	172 lm/W

Product name:

NOVA 5K 100%

Item number:

03.5442

Date and time:

12-04-2021 15:43:18

Description:

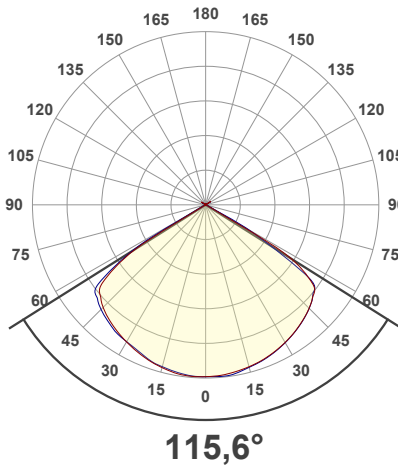
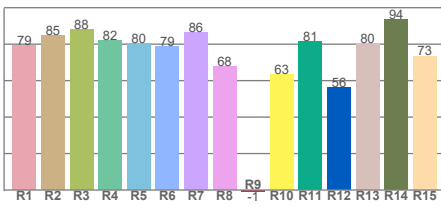
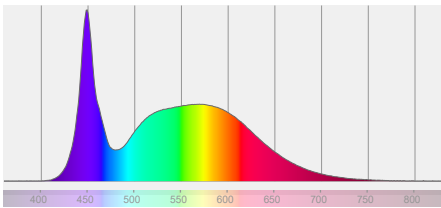
Standby Power [W]: 0,96

Sensor distance: 300cm

Warmup: <2% in 15 minutes

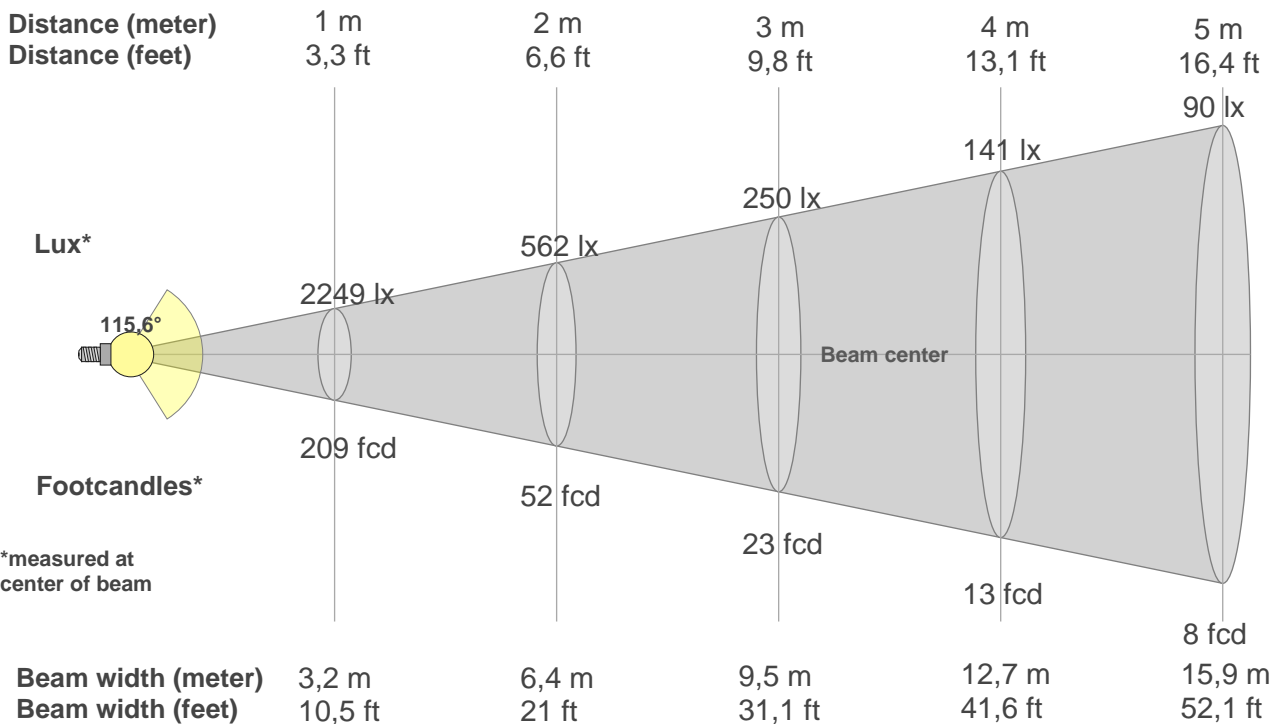
Power supply: 230Vac

Spectra



BEAM DETAILS

Beam distance: 94,8 meters



*measured at center of beam

Beam intensities from 1-20m

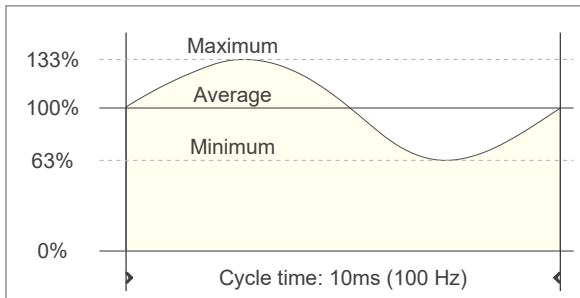
1m	2m	3m	4m	5m	6m	7m	8m	9m	10m	11m	12m	13m	14m	15m	16m	17m	18m	19m	20m
3,3ft	6,6ft	9,8ft	13,1ft	16,4ft	19,7ft	23ft	26,2ft	29,5ft	32,8ft	36,1ft	39,4ft	42,7ft	45,9ft	49,2ft	52,5ft	55,8ft	59,1ft	62,3ft	65,6ft
2249lx	562lx	250lx	141lx	90lx	62lx	46lx	35lx	28lx	22lx	19lx	16lx	13lx	11lx	10lx	9lx	8lx	7lx	6lx	6lx
208,9fc	52,2fcd	23,2fcd	13,1fcd	8,4fcd	5,8fcd	4,3fcd	3,3fcd	2,6fcd	2,1fcd	1,7fcd	1,5fcd	1,2fcd	1,1fcd	0,9fcd	0,8fcd	0,7fcd	0,6fcd	0,6fcd	0,5fcd

FLICKER DETAILS

Flicker curve (complete sampled flicker signal)



Flicker frame (frame of one flicker period)



Flicker frequency:	100 Hz
Flicker index:	0,11
Flicker percentage:	35,85 %
SVM: (Visual flicker)	1,36
Pst LM:	0,05
SDCM	3,4
Rated Color Temperature	6000 K
Duv	0,0010

WARMUP DETAILS according to EN 13032-1

