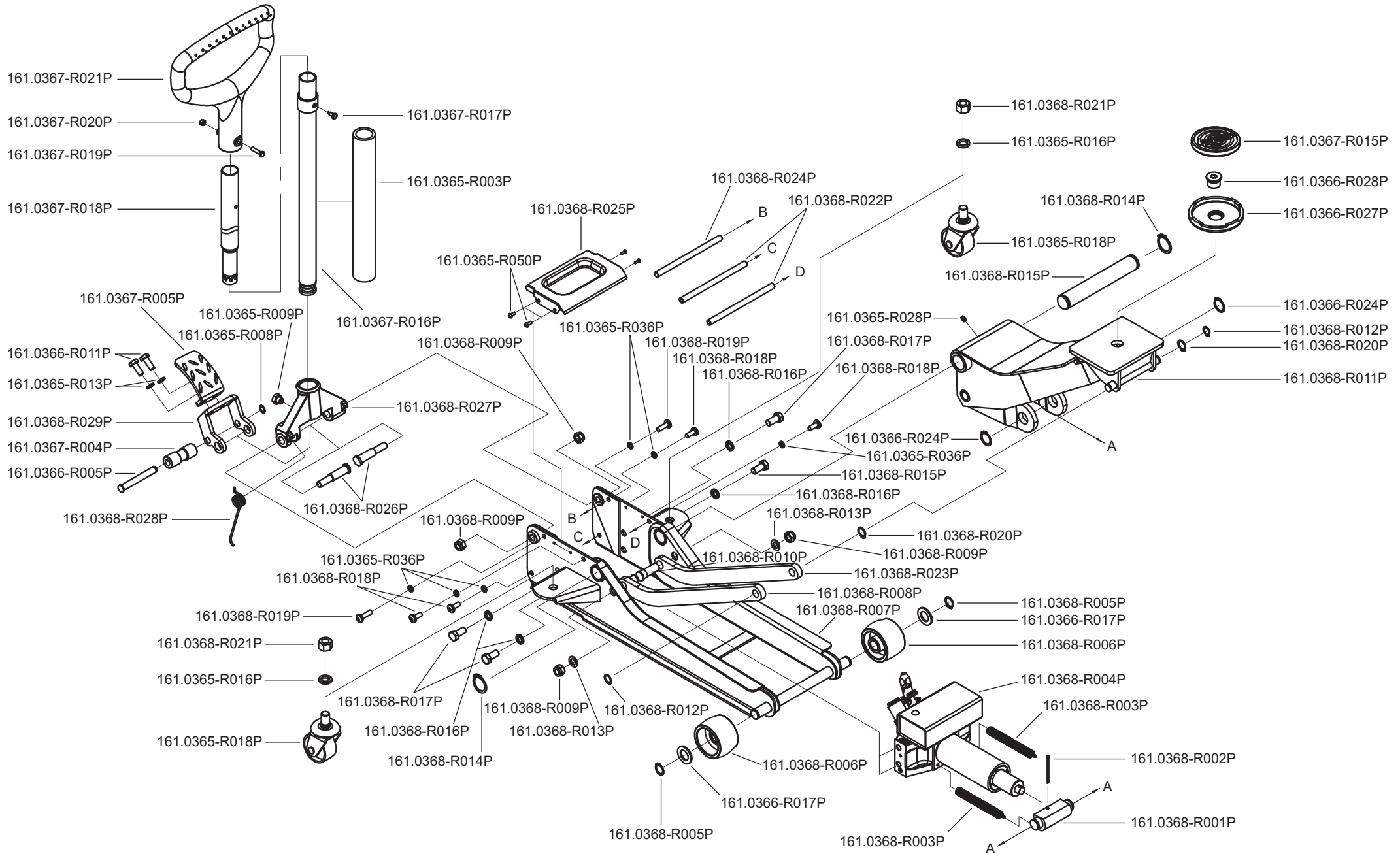


Art. 161.0368



Art. 161.0368


Art.-Nr.	Description	Beschreibung	Menge Qty.
161.0365-R003P	Foam handle protector	Schaumstoffschutz für Lenkstange	1
161.0365-R008P	Shaft retaining ring	Sicherungsring	1
161.0365-R009P	Handle locking screw	Lenkstangenbefestigungsschraube	1
161.0365-R013P	Springwasher	Federring	1
161.0365-R016P	Springwaser for caster wheel	Federring für Lenkrolle	2
161.0365-R018P	Caster wheel	Lenkrolle	2
161.0365-R028P	Grease fitting	Schmiernippel	1
161.0365-R036P	Springwasher	Federring	6
161.0365-R050P	Hexagon flat head screw	Innen6kant Flachkopfschraube	4
161.0366-R005P	Bolt for pump shaft	Bolzen für Umlenkrolle	1
161.0366-R011P	Hexagon bolt	6kant Bolzen	2
161.0366-R017P	Washer	Unterlegscheibe	2
161.0366-R024P	Shaft retaining ring	Sicherungsring	2
161.0366-R027P	Lifting plate	Auflageteller	1
161.0366-R028P	Screw for lifting plate	Schraube für Auflageteller	1
161.0367-R004P	Pump wheel	Umlenkrolle	1
161.0367-R005P	Footpedal	Fußpedal	1
161.0367-R015P	Rubber pad	Gummiauflage	1
161.0367-R016P	Lower handle	Untere Lenkstange	1
161.0367-R017P	Slotted pan head screw for handle	Schlitzschraube für Lenkstange	1
161.0367-R018P	Upper handle	Obere Lenkstange	1
161.0367-R019P	Inner hexagonal screw for handle	Innen6kant Schraube für Griff	1
161.0367-R020P	Nut	Mutter	1
161.0367-R021P	Handle	Griff	1
161.0368-R001P	Piston seating	Pumpkolbenaufnahme	1
161.0368-R002P	Cotter pin	Sicherungssplint	1

Art.-Nr.	Description	Beschreibung	Menge Qty.
161.0368-R003P	Tension spring	Spannfeder	2
161.0368-R004P	Hydraulic unit	Hydraulikeinheit	1
161.0368-R005P	Shaft retaining ring	Sicherungsring	2
161.0368-R006P	Front wheel	Vorderrad	2
161.0368-R007P	Frame	Rahmen	1
161.0368-R008P	Strut right side	Verbindungsstrebe rechts	1
161.0368-R009P	Damper nut	Mutter	4
161.0368-R010P	Adjusting screw	Stellschraube	2
161.0368-R011P	Lifting bar	Hubarm	1
161.0368-R012P	Shaft retaining ring	Sicherungsring	2
161.0368-R013P	Washer	Unterlegscheibe	2
161.0368-R014P	Shaft retaining ring	Sicherungsring	2
161.0368-R015P	Lift bar shaft	Hubarmachse	1
161.0368-R016P	Springwasher	Federring	4
161.0368-R017P	Hexagon bolt	6kant Bolzen	4
161.0368-R018P	Hexagon socket flat head cap	Innen6kant Flachkopfschraube	4
161.0368-R019P	Hexagon socket flat head cap	Innen6kant Flachkopfschraube	2
161.0368-R020P	Shaft retaining ring	Sicherungsring	2
161.0368-R021P	Caster wheel nut	Lenkrollenmutter	2
161.0368-R022P	Spacer bolt	Abstandsbolzen	2
161.0368-R023P	Strut right side	Verbindungsstrebe rechts	1
161.0368-R024P	Spacer bolt	Abstandsbolzen	1
161.0368-R025P	Tool tray	Werkzeugablage	1
161.0368-R026P	Bolt for handle seating	Bolzen für Lenkstangenaufnahme	2
161.0368-R027P	Handle seating	Lenkstangenaufnahme	1
161.0368-R028P	Torsion spring	Torsionsfeder	1
161.0368-R029P	Frame for footpedal	Bügel für Fußpedal	1