

Operator name and signature: Rolf Ugilt *Rolf Ugilt*

Output:	3778 lm
Peak:	1280 cd
Lux@50cm:	5119 Lux
Power:	27,4 W
Power Factor / DF $\phi$ 1:	1,0
Standby power	1,27 W

Light efficacy:

138 Lumen/Watt

Light quality:

CRI: 79,9

Color temperature:

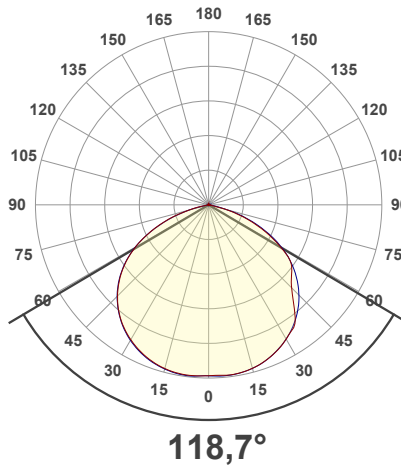
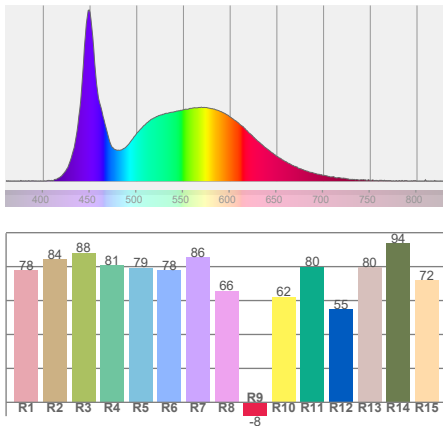
6410 K



According to regulation (EU) 2019/2015

Directionality:	Directional
Useful Lumen:	3123 lm
Energy Class:	E
$\eta$ TM - Efficacy	134 lm/W

Spectra



Product name:  
**FLOOD LITE MC 100%**

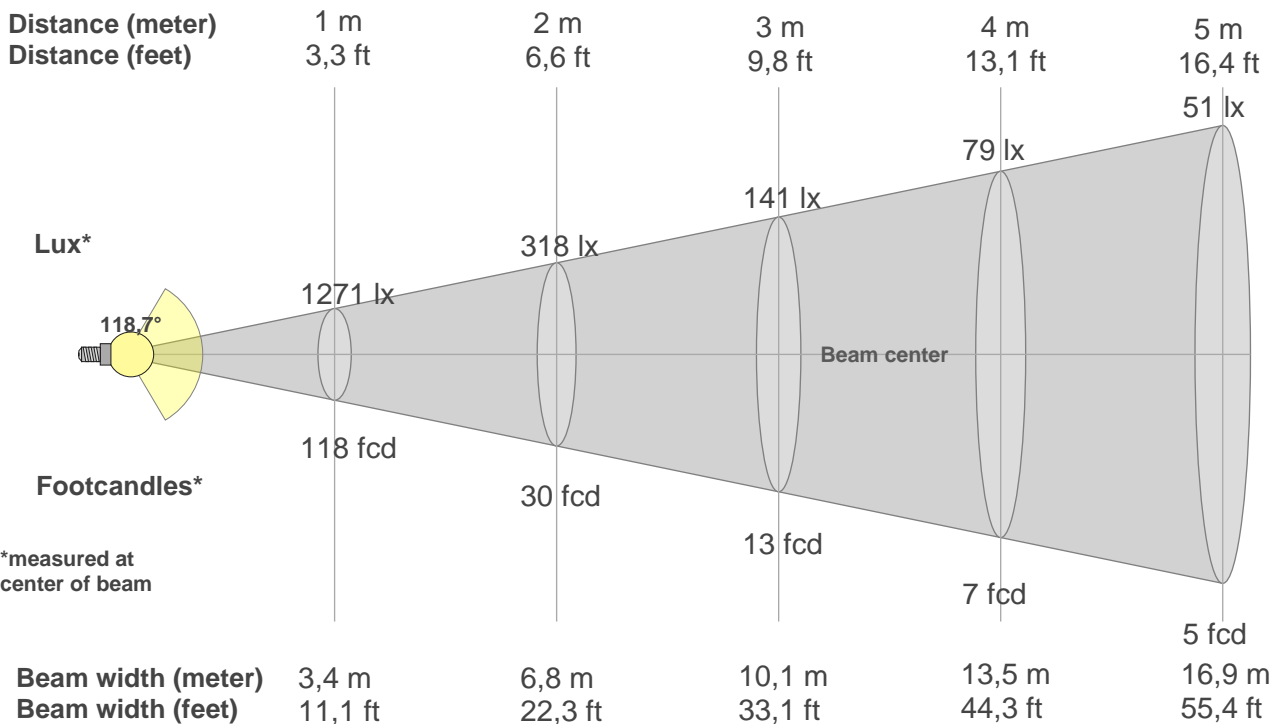
Item number:  
**03.5662**

Date and time:  
**22-04-2021 11:18:06**

Description:  
**Standby Power [W]: 1,27**  
**Sensor distance: 250 cm**  
**Warmup: <2% in 15 minutes**  
**Power: 230VAC**

**BEAM DETAILS**

Beam distance: 71,3 meters



\*measured at center of beam

**Beam intensities from 1-20m**

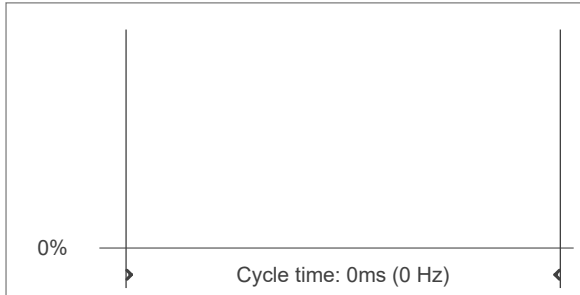
1m	2m	3m	4m	5m	6m	7m	8m	9m	10m	11m	12m	13m	14m	15m	16m	17m	18m	19m	20m
3,3ft	6,6ft	9,8ft	13,1ft	16,4ft	19,7ft	23ft	26,2ft	29,5ft	32,8ft	36,1ft	39,4ft	42,7ft	45,9ft	49,2ft	52,5ft	55,8ft	59,1ft	62,3ft	65,6ft
1271lx	318lx	141lx	79lx	51lx	35lx	26lx	20lx	16lx	13lx	11lx	9lx	8lx	6lx	6lx	5lx	4lx	4lx	4lx	3lx
118fcd	29,5fcd	13,1fcd	7,4fcd	4,7fcd	3,3fcd	2,4fcd	1,8fcd	1,5fcd	1,2fcd	1fcd	0,8fcd	0,7fcd	0,6fcd	0,5fcd	0,5fcd	0,4fcd	0,4fcd	0,3fcd	0,3fcd

**FLICKER DETAILS**

Flicker curve (complete sampled flicker signal)



Flicker frame (frame of one flicker period)



Flicker frequency:	n/a Hz
Flicker index:	n/a
Flicker percentage:	n/a %
SVM: (Visual flicker)	n/a
Pst LM:	n/a
SDCM	6,1
Rated Color Temperature	6000 K
Duv	0,0012

**WARMUP DETAILS** according to EN 13032-1

