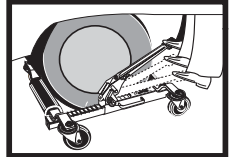
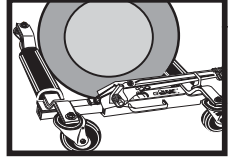
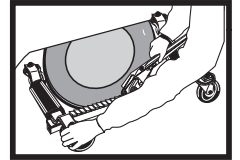


GOJAK[®]

THE FASTER CASTER SYSTEM[®]



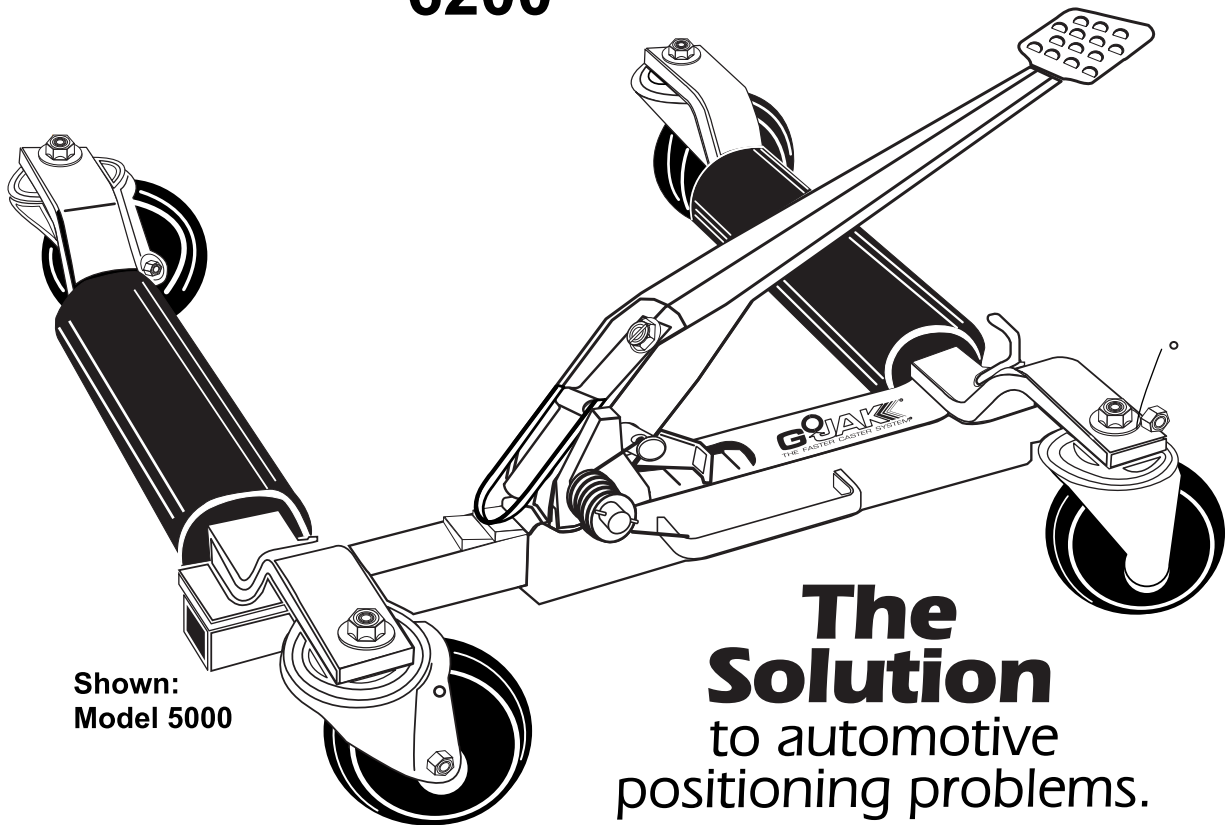
OPERATION AND PARTS MANUAL

MODELS

4500

5000

6200

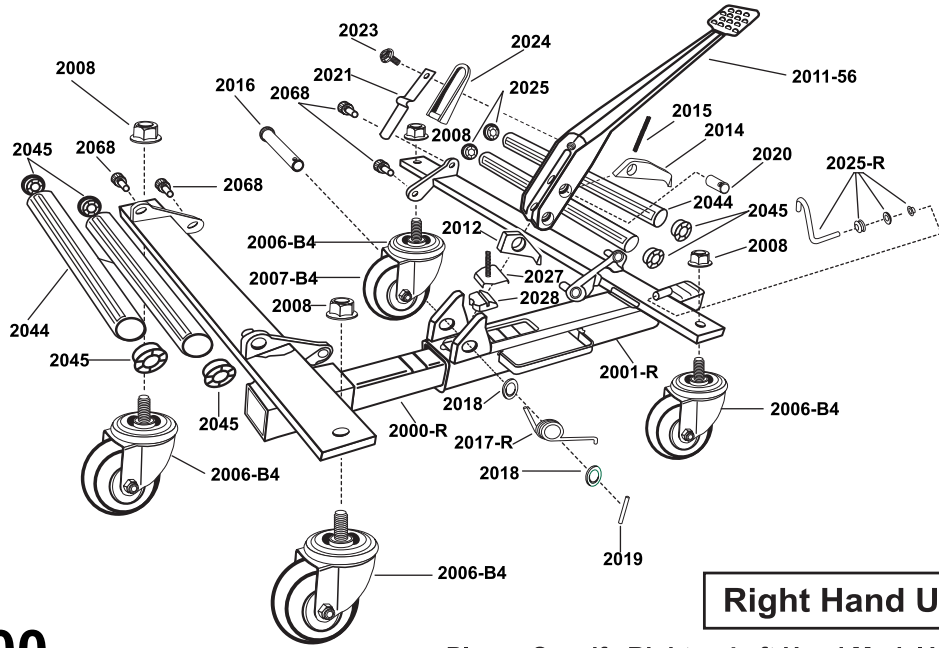


Shown:
Model 5000

**The
Solution**
to automotive
positioning problems.

SERENCO 
serious tools > serious results

Serenco Nederland BV
Maarssebroeksedijk 39
3542 DM Utrecht
info@serenco.nl
www.serenco.nl

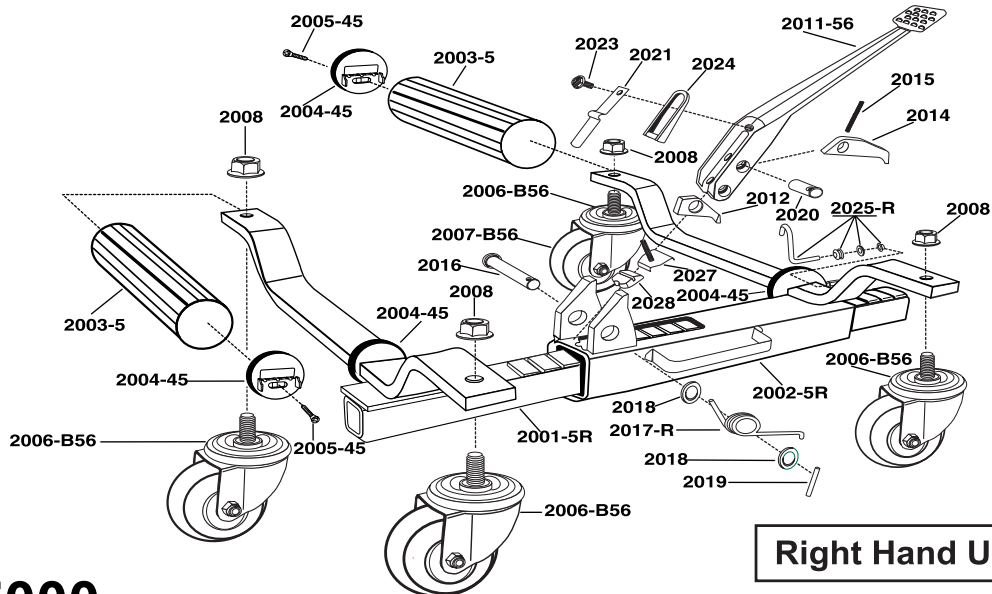


GOJAK
MODEL 4500

Right Hand Unit Shown

Please Specify Right or Left Hand Model When Ordering!

PART #	DESCRIPTION	PART #	DESCRIPTION	PART #	DESCRIPTION
2000-R	Inner Body & Axle Assy. R/H	2016	Lower Pivot Shaft	2027	End Stop Clip & Spring
2000-L	Inner Body & Axle Assy. L/H	2017-R	Torsion Spring-R/H	2028	End Stop
2001-R	Outer Body & Axle Assy. R/H	2017-L	Torsion Spring-L/H	2044	Roller (Steel)
2001-L	Outer Body & Axle Assy. L/H	2018	Washer	2045	Raceway
2006-B4	Caster Assy. 3"	2019	Roller Pin	2068	1/2 13 7/8" Skt. Cap Screw
2007-B4	Wheel & Bearing 3"	2020	Upper Pivot Shaft	3011-56	GoJak Logo Label
2008	Lock Nut	2021	Upper Flat Spring	3020	Model 4500 S.S Label
2011-56	Pedal	2023	Self-Tapping Bolt	3010	Warning Label
2012	Locking Pawl	2024	Directional Lever	3003	Serial Label
2014	Working Pawl	2025-R	Pedal Lock Assy.-R/H		
2015	Working Pawl Spring	2025-L	Pedal Lock Assy.-L/H		

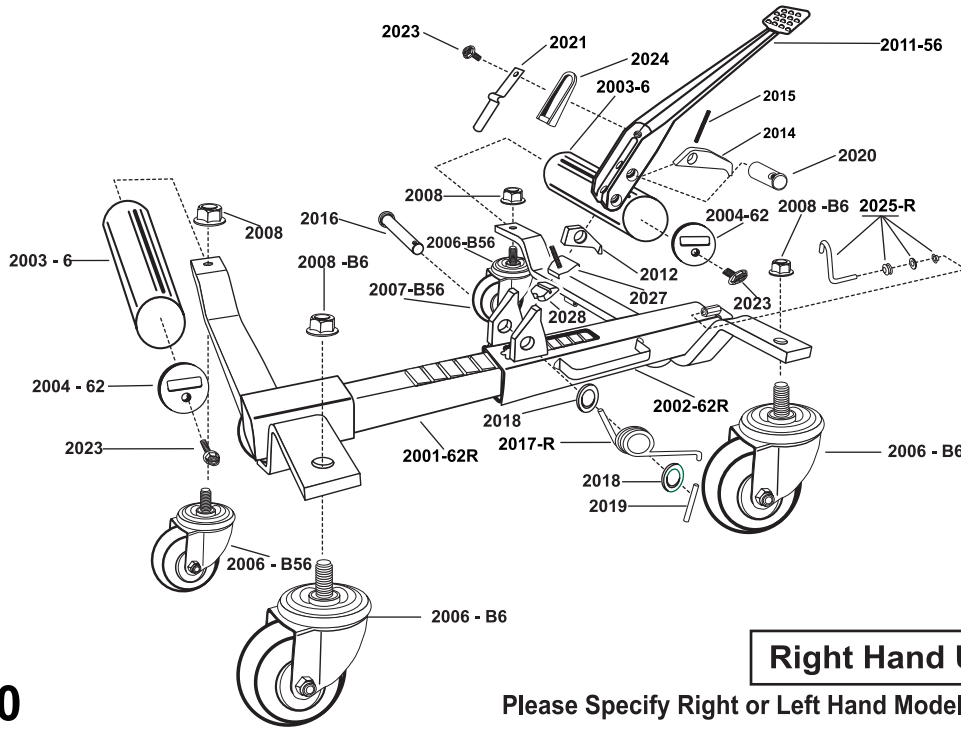


GOJAK
MODEL 5000

Right Hand Unit Shown

Please Specify Right or Left Hand Model When Ordering!

PART #	DESCRIPTION	PART #	DESCRIPTION	PART #	DESCRIPTION
2001-5R	Inner Body & Axle Assy. R/H	2011-56	Pedal	2021	Flat Spring
2001-5L	Inner Body & Axle Assy. L/H	2012	Locking Pawl	2023	Self-Tapping Bolt
2002-5R	Outer Body & Axle Assy. R/H	2014	Working Pawl	2024	Directional Lever
2002-5L	Outer Body & Axle Assy. L/H	2015	Working Pawl Spring	2025-R	Pedal Lock Assy. R/H
2003-5	Roller (High Impact PVC)	2016	Lower Pivot Shaft	2025-L	Pedal Lock Assy. L/H
2004-45	Roller Raceway (Nylon)	2017-R	Torsion Spring R/H	2027	End Stop Clip & Spring
2005-45	Raceway Lock Bolt	2017-L	Torsion Spring L/H	2028	End Stop
2006-B56	4" Black Caster Assy.	2018	Washer	3011-56	GoJak Logo Label
2007-B56	Wheel & Bearing Black 4"	2019	Roll Pin	3016-5	GoJak Model Label
2008	Lock Nut Caster 4"	2020	Upper Pivot Shaft	3010	Warning Label
				3003	Serial No. Label



GOJAK[®]
MODEL 6200

Right Hand Unit Shown

Please Specify Right or Left Hand Model When Ordering!

PART#	DESCRIPTION	PART#	DESCRIPTION	PART#	DESCRIPTION
2001-62R	Inner Body & Axle Assy. R/H	2008-B6	Lock Nut Caster 5"	2021	Flat Spring
2001-62L	Inner Body & Axle Assy. L/H	2011-56	Pedal	2023	Self-Tapping Bolt
2002-62R	Outer Body & Axle Assy. R/H	2012	Locking Pawl	2024	Directional Lever
2002-62L	Outer Body & Axle Assy. L/H	2014	Working Pawl	2025-R	Pedal Lock Assy. R/H
2003-6	Roller (Steel)	2015	Working Pawl Spring	2025-L	Pedal Lock Assy. L/H
2004-62	Roller Raceway	2016	Lower Pivot Shaft	2027	End Stop Clip & Spring
2006-B56	Caster Assy 4"	2017-R	Torsion Spring R/H	2028	End Stop
2006-B6	Caster Assy, 5"	2017-L	Torsion Spring L/H	3011-56	GoJak Logo Label
2007-B56	Wheel & Bearing 4"	2018	Washer	3016-6	GoJak Model Label
2007-B6	Wheel & Bearing 5"	2019	Roll Pin	3010	Warning Label
2008	Lock Nut Caster 4"	2020	Upper Pivot Shaft	3003	Serial No. Label

Congratulations: You have just purchased one of the most useful vehicle maneuvering tools available: GoJak[®] is quick and easy to use, and safe in operation if used in accordance with these instructions. Read all the instructions and warnings first before attempting to operate. Make sure all additional personnel who are to use GoJak[®] are familiarized with its operation.

IMPORTANT!
READ AND UNDERSTAND THESE WARNINGS FIRST!

WARNING: *DO NOT* operate GoJak[®] on inclined surfaces. GoJaks must be used on level surfaces only. Unanticipated motion will occur as soon as GoJak[®] lifts tire from surface.

WARNING: *DO NOT* start the vehicle's engine, or drive with GoJaks in use. GoJaks are designed for hand maneuvering of vehicles only.

WARNING: *DO NOT* attempt to push GoJaks over obstacles; they are designed to be used on level and reasonably smooth surfaces only.

WARNING: *DO NOT* use GoJaks to lift tires wider than the rating that appears below and on the warning label on the unit. Tire widths are:

- Model 4500 is 20"
- Model 5000 is 9"
- Model 6200 is 13"

WARNING: DO NOT neglect regular lubrication requirements as outlined in the lubrication instruction section. Without proper lubrication, it is possible that internal scarring of the telescoping components may occur. This could lead to binding and unanticipated release of GoJak®.

WARNING: DO NOT overload GoJak® beyond the load rating per unit:

- **Model 4500** is 1,125 Lbs., 510 Kg.
- **Model 5000** is 1,250 Lbs., 567 Kg.
- **Model 6200** is 1,550 Lbs., 700 Kg.

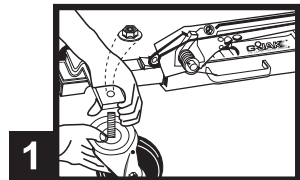
**OBSERVE THESE WARNINGS AT ALL TIMES.
LACK OF REGULAR LUBRICATION, OVER LOADING, AND
MISUSE CAN BE DANGEROUS AND DAMAGE TO GOJAKS FROM
THE ABOVE MISUSE MAY VOID THE WARRANTY.**

LUBRICATION INSTRUCTIONS: LUBRICATE WEEKLY

- 1.** Liberally coat toothed shaft with standard bearing grease (both sides and bottom only - do not lubricate teeth).
- 2.** Lubricate pivot pins and mechanism with SAE 30 weight motor oil, or light machine oil.
- 3.** Turn GoJak® over and lubricate ball bearing raceways on casters with SAE 30 weight motor oil or light machine oil. (Axle bearings are permanently lubricated at the factory, and do not require lubrication).
- 4. DO NOT lubricate raceways on Models 4500 and 5000!** These models use a self-lubricating raceway, and reduced raceway life may occur when continually subjected to certain petroleum products. Lubricate roller raceways at each end with bearing grease only on **Model 6200**.

CASTER ASSEMBLY INSTRUCTIONS

1. REMOVE CASTERS FROM PLASTIC BAG AND INSERT STEM OF CASTER THROUGH AXLE HOLE. INSTALL LOCK NUTS. TIGHTEN NUTS TO APPROXIMATELY 80 FT. LBS. OF TORQUE.



GOJAK® OPERATING INSTRUCTIONS

- 2** After casters are installed, you are now ready to operate GoJak®. Place GoJak® on floor and press down on pedal to release pedal lock. Place directional lever (U-shaped lever found on top of pedal) in its lowered position. Depress pedal once again to release locking pawl and GoJak® will now open.
- 3** Expand GoJak® far enough to place around and position so both rollers now contact the tire tread. To obtain the best control of GoJak® while expanding around tire, place your left hand on top of the left side axle and your right hand at the center of the pedal, as shown in the diagram at the right.
- 4** Install GoJak® so that the unit is parallel to the sidewall of the tire to be lifted. Leave approximately 3/4" of clearance between tire and GoJak®. This is very important: if unit is misaligned, it is possible that the tire will be forced to hit the axle of the GoJak® and not the rollers, this may damage the GoJak® and void the warranty.
- 5** To lift the tire, flip directional lever up and place foot on pedal depressing with smooth, even strokes. Cycle pedal until tire is lifted from the surface one inch or less. After lifting, the lower the tire is to the ground the more stable GoJak® will be. Repeat process on the other tires and maneuver the vehicle as required. To release GoJak®, place directional lever in the down position and cycle the pedal until the rollers disengage from the tire. GoJak® may now be removed.

