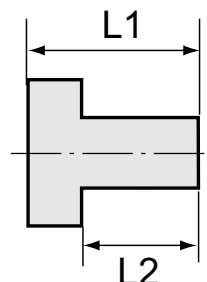


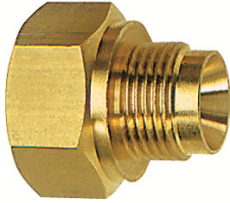


251.02

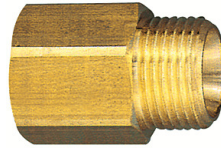


Reduziernippel, kurze Ausführung

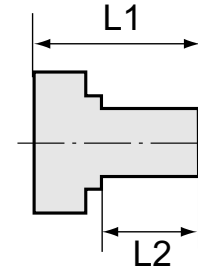
Artikel Nr.	Ident Nr.	Außengewinde	Innengewinde	L1 mm	L2 mm	SW mm
290.940	108010	M14x1,5	M10x1,0	11,0	7,0	17
290.941	108011	M24x1,5	M16x1,5	24,0	16,0	27
251.00	111101	G 1/8	M5	11,0	7,0	14
251.00/S	111102	G 1/4	M5	14,0	10,0	17
251.01	101320	G 1/4	G 1/8	13,0	8,0	17
251.06	111103	G 3/8	G 1/8	13,0	9,5	19
251.02	100908	G 3/8	G 1/4	13,0	9,5	19
251.08	111104	G 1/2	G 1/8	18,0	12,0	24
251.07	101115	G 1/2	G 1/4	15,5	11,5	22
251.03	100913	G 1/2	G 3/8	15,5	11,5	22
251.19	111105	G 3/4	G 1/4	18,0	12,0	27
251.09	111106	G 3/4	G 3/8	18,0	12,0	32
251.04	111107	G 3/4	G 1/2	21,0	14,0	32
251.10	111108	G 1	G 1/2	24,0	16,0	36
251.05	100918	G 1	G 3/4	18,0	12,0	36
251.20	111109	G 1 1/4	G 3/4	23,0	16,0	42
251.11	111110	G 1 1/4	G 1	24,0	16,0	42
251.21	111111	G 1 1/2	G 3/4	24,0	16,0	50
251.11/1	111112	G 1 1/2	G 1	24,0	16,0	48
251.12	100921	G 1 1/2	G 1 1/4	21,0	15,0	50
251.12/1	111113	G 2	G 1	28,0	18,0	62
251.12/2	111114	G 2	G 1 1/4	26,5	18,0	62
251.13	101173	G 2	G 1 1/2	30,0	20,0	65



252.10



252.16

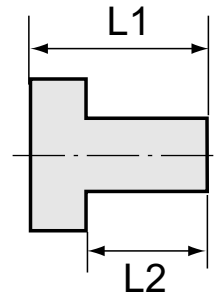


Reduziernippel, lange Ausführung

Artikel Nr.	Ident Nr.	Außengewinde	Innengewinde	L1 mm	L2 mm	SW mm
252.08/1	111115	M5	M5	15,0	5,0	8
252.08/2	111116	M5	G 1/8	17,0	5,0	14
252.08/3	111117	G 1/8	M5	17,0	7,0	14
252.11	111118	G 1/8	G 1/8	23,0	8,0	14
252.08	111119	G 1/8	G 1/4	26,0	10,0	17
252.12	111120	G 1/4	G 1/8	28,0	10,0	17
252.13	111121	G 1/4	G 1/4	28,0	10,0	17
252.09	111122	G 1/4	G 3/8	26,0	10,0	19
252.14	111123	G 3/8	G 1/4	29,0	10,0	19
252.15	111124	G 3/8	G 3/8	29,0	10,0	19
252.10	111125	G 3/8	G 1/2	27,0	12,0	24
252.16	111126	G 1/2	G 3/8	34,0	12,0	24
252.17	111127	G 1/2	G 1/2	34,0	12,0	24
252.18	111128	G 1/2	G 3/4	38,0	13,0	32
252.19	111129	G 3/4	G 1	26,0	11,0	36



252.92



Verschlussschrauben mit Innensechskant und Bund

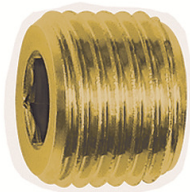
Artikel Nr.	Ident Nr.	Gewinde	L1 mm	L2 mm	SW mm
252.91	111130	G 1/8 Innensechskant	11,0	8,0	5
252.92	111131	G 1/4 Innensechskant	13,0	10,0	6
252.93	111132	G 3/8 Innensechskant	15,0	12,0	8
252.94	111133	G 1/2 Innensechskant	18,0	14,0	10
252.94-2	111134	G 3/4 Innensechskant	24,0	20,0	12
252.94-3	111135	G 1 Innensechskant	27,0	22,0	17



252.102

Verschlussschrauben mit Innensechskant, ohne Bund

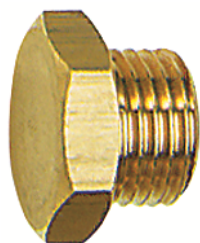
Artikel Nr.	Ident Nr.	Gewinde	L1 mm	SW mm
290.970	108022	M8x0,75 Innensechskant	8,0	4
290.971	108023	M10x1,0 Innensechskant	8,0	5
290.972	108024	M12x1,5 Innensechskant	8,0	6
290.973	108025	M14x1,5 Innensechskant	10,0	7
252.101	111136	G 1/8 Innensechskant	8,0	5
252.102	111137	G 1/4 Innensechskant	10,0	6
252.103	111138	G 3/8 Innensechskant	12,5	8
252.104	111139	G 1/2 Innensechskant	14,0	10



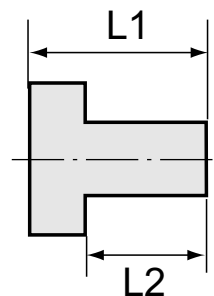
253.102

Verschlussschrauben mit Innensechskant, ohne Bund

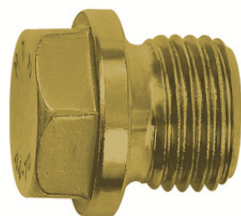
Artikel Nr.	Ident Nr.	Gewinde	L1 mm	SW mm
253.101	111140	R 1/8 Innensechskant	8,0	5
253.102	111141	R 1/4 Innensechskant	10,0	7
253.103	111142	R 3/8 Innensechskant	10,0	8
253.104	111143	R 1/2 Innensechskant	10,0	10
253.105	111144	R 3/4 Innensechskant	14,0	14
253.106	111145	R 1 Innensechskant	12,0	17



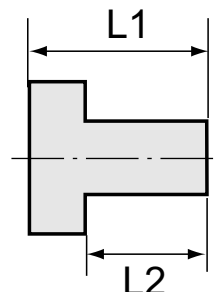
252.96


Verschlussschrauben mit Außensechskant

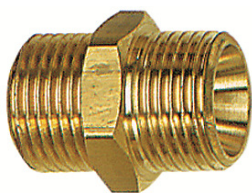
Artikel Nr.	Ident Nr.	Gewinde	L1 mm	L2 mm	SW mm
252.95	111146	G 1/8 Außensechskant	11,0	6,0	13
252.96	111147	G 1/4 Außensechskant	13,0	8,0	17
252.97	111148	G 3/8 Außensechskant	14,0	8,0	19
252.98	111149	G 1/2 Außensechskant	16,0	10,0	24



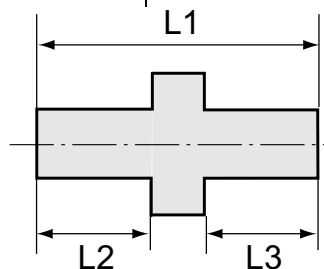
252.112


Verschlussschrauben mit Außensechskant und Bund

Artikel Nr.	Ident Nr.	Gewinde	L1 mm	L2 mm	SW mm
252.110	111150	G 1/8 Außensechskant	17,0	8,0	10
252.111	111151	G 1/4 Außensechskant	21,0	12,0	13
252.112	111152	G 3/8 Außensechskant	21,0	12,0	17
252.113	111153	G 1/2 Außensechskant	26,0	14,0	19
252.114	111154	G 3/4 Außensechskant	30,0	16,0	24
252.115	111155	G 1 Außensechskant	32,0	16,0	27

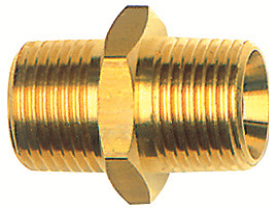


252.05

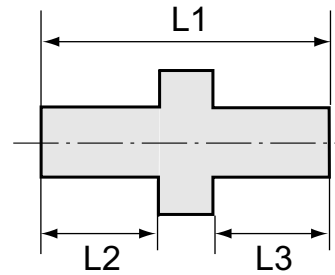


Doppelgewindenippel, Außengewinde zylindrisch

Artikel Nr.	Ident Nr.	Gewinde 1	Gewinde 2	L1 mm	L2 mm	L3 mm	SW mm
290.955	108015	M14x1,5	M14x1,5	23,0	9,0	9,0	17
290.956	108016	M16x1,5	M16x1,5	23,0	9,0	9,0	19
290.957	108017	M24x1,5	M24x1,5	40,0	16,0	16,0	27
252 C	111156	M5	M5	13,0	5,0	5,0	7
252 D	111157	M5	G 1/8	17,0	5,0	7,0	14
252 E	111158	M5	G 1/4	21,0	7,0	9,0	17
252 A	111159	G 1/8	G 1/8	21,0	8,0	8,0	14
252 B	111160	G 1/8	G 1/4	22,0	9,0	8,0	17
252 B/1	111161	G 1/8	G 3/8	25,0	9,0	11,0	19
290.950	108012	G 1/4	M14x1,5	23,0	9,0	9,0	17
252.01	101319	G 1/4	G 1/4	23,0	9,0	9,0	17
252.36	111162	G 1/4 links	G 1/4 links	25,0	10,0	10,0	17
252.02	111163	G 1/4	G 3/8	24,0	9,0	10,0	19
252.02/S	101228	G 1/4	G 1/2	29,0	11,0	12,0	24
290.951	108013	G 3/8	M16x1,5	23,0	9,0	9,0	19
252.03	100906	G 3/8	G 3/8	25,0	10,0	10,0	19
252.37	111164	G 3/8 links	G 3/8 links	37,0	13,5	13,5	17
252.04	101243	G 3/8	G 1/2	27,0	10,0	12,0	24
252.04/S	111165	G 3/8	G 3/4	36,0	12,0	16,0	32
290.952	108014	G 1/2	M24x1,5	36,0	16,0	12,0	27
252.05	100911	G 1/2	G 1/2	29,0	12,0	12,0	24
252.06	111166	G 1/2	G 3/4	33,0	12,0	12,0	32
252.06/S	111167	G 1/2	G 1	40,0	16,0	16,0	36
252.07	111168	G 3/4	G 3/4	33,0	12,0	12,0	32
252.07/1	111169	G 3/4	G 1	40,0	16,0	16,0	36
252.07/2	100916	G 1	G 1	42,5	17,0	17,0	36
252.07/2-1	111170	G 1	G 1 1/4	32,0	14,0	12,0	42
252.07/2-2	111171	G 1	G 1 1/2	39,0	14,5	14,5	50
252.07/2-3	111172	G 1	G 2	42,0	18,0	15,0	60
252.07/3	111173	G 1 1/4	G 1 1/4	39,0	16,0	16,0	42
252.07/3-1	111174	G 1 1/4	G 1 1/2	40,5	15,0	18,0	50
252.07/3-2	111175	G 1 1/4	G 2	43,0	16,0	18,0	60
252.07/4	100920	G 1 1/2	G 1 1/2	50,0	20,0	20,0	50
252.07/4-1	111176	G 1 1/2	G 2	44,0	18,0	20,5	60
252.07/5	101145	G 2	G 2	50,0	20,0	20,0	62
252.07/5-1	111177	G 2	G 2 1/2	44,0	24,0	19,0	77
252.07/5-2	111178	G 2	G 3	50,0	20,0	20,0	89
252.07/6	111179	G 2 1/2	G 2 1/2	59,0	24,0	24,0	77
252.07/6-1	111180	G 2 1/2	G 3	53,0	20,0	22,5	89
252.07/7	111181	G 3	G 3	60,0	24,5	24,5	89



252.303


Doppelgewindenippel, konisch, nach ISO 7-1

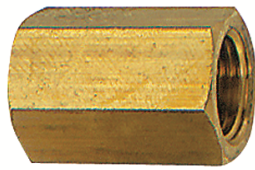
Artikel Nr.	Ident Nr.	Gewinde 1	Gewinde 2	L1 mm	L2 mm	L3 mm	SW mm
252.300	111182	R 1/8	R 1/8	21,0	8,0	8,0	10
252.300-2	111183	R 1/8	R 1/4	24,5	8,0	11,5	14
252.300-3	111184	R 1/8	R 3/8	26,0	8,0	13,0	17
252.301	111185	R 1/4	R 1/4	30,0	12,0	12,0	14
252.301-2	111186	R 1/4	R 3/8	29,5	11,5	13,0	17
252.301-3	111187	R 1/4	R 1/2	32,5	11,5	15,5	22
252.302	100907	R 3/8	R 3/8	38,0	16,0	16,0	22
252.302-2	111188	R 3/8	R 1/2	34,0	15,5	13,0	22
252.302-3	111189	R 3/8	R 3/4	36,5	13,0	17,5	27
252.303	100912	R 1/2	R 1/2	38,0	16,0	16,0	27
252.303-2	111190	R 1/2	R 3/4	39,0	17,5	15,5	27
252.303-3	111191	R 1/2	R 1	42,5	20,0	15,5	34
252.304	111192	R 3/4	R 3/4	51,5	22,0	22,0	32
252.304-2	111193	R 3/4	R 1	44,5	20,0	17,5	34
252.305	100917	R 1	R 1	47,0	19,5	19,5	41



252.77

Lösbare Doppelnippel, mit Außengewinde, konisch dichtend

Artikel Nr.	Ident Nr.	Gewinde 1	Gewinde 2	L1 mm	SW mm	SW 1 mm
252.75	111194	R 1/8	R 1/8	27,0	15	5
252.81	111195	R 1/8	R 1/4	30,0	15	5
252.76	111196	R 1/4	R 1/4	33,5	19	6
252.82	111197	R 1/4	R 3/8	34,5	19	6
252.77	111198	R 3/8	R 3/8	36,5	22	8
252.78	111199	R 1/2	R 1/2	44,0	27	12
252.79	111200	R 3/4	R 3/4	53,0	36	14
252.80	111201	R 1	R 1	63,5	46	19



252.22

Muffen mit Außensechskant

Artikel Nr.	Ident Nr.	Gewinde	L1 mm	SW mm
252.20	111202	M5	12,0	8
252.21	111203	G 1/8	22,0	14
252.22	111204	G 1/4	26,0	17
252.23	111205	G 3/8	26,0	22
252.24	111206	G 1/2	30,0	27
252.24/1	111207	G 3/4	36,0	32
252.24/2	111208	G 1	40,0	41



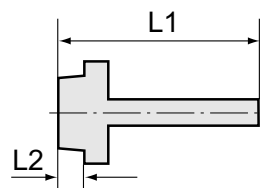
290.961

Muffen mit Außensechskant, reduzierend

Artikel Nr.	Ident Nr.	Gewinde 1	Gewinde 2	L1 mm	SW mm
252.25	111209	G 1/8	G 1/4	26,0	17
252.26	111210	G 1/4	G 3/8	26,0	22
252.27	111211	G 3/8	G 1/2	30,0	27
290.960	108018	G 1/2	M14x1,5	24,0	27
290.961	108019	G 1/2	M16x1,5	24,0	27
290.962	108020	G 3/4	M14x1,5	28,0	32
290.963	108021	G 3/4	M16x1,5	28,0	32

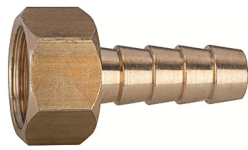


239 E

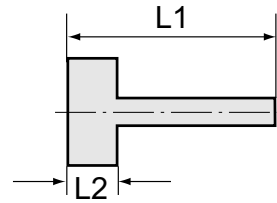


Einschraubschlauchtüllen mit Außengewinde zylindrisch

Artikel Nr.	Ident Nr.	Gewinde	für Schlauch mm	L1 mm	L2 mm	SW mm
239.00	111212	M5	LW 4	15,5	5,0	7
239.01	111213	G 1/8	LW 4	41,5	9,0	14
239.02	111214	G 1/8	LW 6	41,5	9,0	14
N239.02-1	111215	G 1/8	LW 8	36,0	7,0	14
239.03	111216	G 1/8	LW 9	48,5	10,0	17
239 A	111217	G 1/4	LW 4	48,5	10,0	17
239 B	111218	G 1/4	LW 6	48,5	10,0	17
N239 B-1	111219	G 1/4	LW 8	39,0	9,0	17
239 C	111220	G 1/4	LW 9	48,5	10,0	17
N239 C-1	111221	G 1/4	LW 10	39,0	9,0	17
239 C/S	111222	G 1/4	LW 13	48,5	10,0	19
239 D	111223	G 3/8	LW 4	48,5	10,0	19
239 E	111224	G 3/8	LW 6	48,5	10,0	19
N239 E-1	111226	G 3/8	LW 8	39,0	9,0	19
239.40	111225	G 3/8 links	LW 6	48,5	10,0	19
239 F	111227	G 3/8	LW 9	48,5	10,0	19
N239 F-1	111229	G 3/8	LW 10	39,0	9,0	19
239.45	111228	G 3/8 links	LW 9	48,5	10,0	19
239 F/S	111230	G 3/8	LW 13	48,5	10,0	19
239 G	111231	G 1/2	LW 6	48,5	10,0	24
N239 G-1	111232	G 1/2	LW 8	42,0	11,0	24
239 H	111233	G 1/2	LW 9	48,5	10,0	24
N239 H-1	111234	G 1/2	LW 10	42,0	11,0	24
239 J	107484	G 1/2	LW 13	50,0	10,0	24
243.78	107485	G 1/2	LW 16	58,0	10,0	20
243.79	107486	G 1/2	LW 19	63,0	10,0	20
239 K	111235	G 3/4	LW 9	50,5	11,0	27
239 M	107487	G 3/4	LW 13	52,0	11,0	27
239 N	107488	G 3/4	LW 16	42,5	10,0	32
239 P	107489	G 3/4	LW 19	50,5	11,0	27
N239 R	111236	G 3/4	LW 25	54,0	12,0	32
N239 S	111237	G 1	LW 19	55,0	13,0	38
239 W	111238	G 1	LW 25	51,5	11,0	38
239 Z	111239	G 1	LW 32	57,0	12,0	38
N239 Z-1	111240	G 1 1/4	LW 32	61,0	14,0	50
N239 Z-2	111241	G 1 1/4	LW 38	68,5	15,0	42
N239 Z-3	111242	G 1 1/2	LW 32	67,0	15,0	55
N239 Z-4	111243	G 1 1/2	LW 38	71,0	15,0	55
N239 Z-5	111244	G 1 1/2	LW 50	71,0	15,0	55
N239 Z-6	111245	G 2	LW 50	88,0	20,0	70



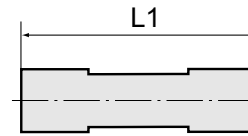
239.19


Aufschraubschlauchtüllen mit Innengewinde zylindrisch

Artikel Nr.	Ident Nr.	Gewinde	für Schlauch mm	L1 mm	L2 mm	SW mm
239.10	111246	G 1/8	LW 6	35,0	10,0	12
239.11	111247	G 1/8	LW 8	35,0	10,0	12
N239.11-1	111248	G 1/8	LW 9	33,5	10,5	14
239.12	111249	G 1/4	LW 6	36,0	11,0	15
239.13	111250	G 1/4	LW 8	36,0	11,0	15
N239.13-1	111251	G 1/4	LW 9	35,0	12,0	17
239.14	111252	G 1/4	LW 10	36,0	11,0	15
239.15	111253	G 1/4	LW 13	40,5	11,0	15
239.18	111254	G 3/8	LW 6	36,0	11,0	19
239.19	111255	G 3/8	LW 8	36,0	11,0	19
N239.19-1	111256	G 3/8	LW 9	36,0	13,0	19
239.20	111257	G 3/8	LW 10	36,0	11,0	19
239.21	111258	G 3/8	LW 13	40,5	11,0	19
239.25	111259	G 1/2	LW 6	39,0	14,5	23
239.26	111260	G 1/2	LW 8	39,0	14,5	23
N239.26-1	111261	G 1/2	LW 9	37,0	14,0	24
239.27	111262	G 1/2	LW 10	39,0	14,5	23
239.28	111263	G 1/2	LW 13	44,0	14,5	23
N239.28-1	111264	G 3/4	LW 13	39,5	16,5	30
N239.28-2	111265	G 3/4	LW 16	39,5	16,5	30
N239.28-3	111266	G 3/4	LW 19	39,5	16,5	30
N239.29	111267	G 1	LW 19	42,5	19,5	38
N239.29-1	111268	G 1	LW 25	47,0	19,5	38



170 B

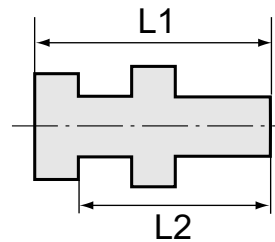


Doppelschlauchtüllen

Artikel Nr.	Ident Nr.	für Schlauch mm	L1 mm
170 A	111269	LW 6	72,0
170 B	111270	LW 9	72,0
170 C	111271	LW 13	72,0
170 D	111272	LW 16	72,0
170 E	111273	LW 19	72,0
170 F	111274	LW 25	72,0



252.42

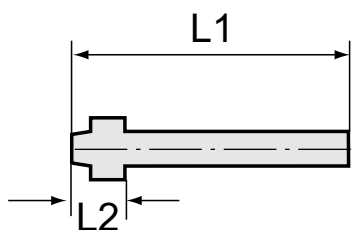


Schottverschraubungen

Artikel Nr.	Ident Nr.	Außengewinde	Innengewinde	L1 mm	L2 mm	SW 1 mm	SW 2 mm
252.40	111275	G 1/8	M5	15,0	11,5	14	14
252.41	111276	G 1/4	G 1/8	18,0	14,0	17	17
252.42	111277	G 3/8	G 1/4	22,0	17,0	19	24
252.43	111278	G 1/2	G 3/8	27,0	21,0	24	24



236 C


Schlauchtüllen mit Kugelnippel

Artikel Nr.	Ident Nr.	für Schlauch mm	für Überwurfmutter	L1 mm	L2 mm
236.01	111279	LW 4	G 1/8	47,0	12,0
236.02	111280	LW 6	G 1/8	33,5	6,0
236 A	111281	LW 4	G 1/4	47,0	13,5
236 B	111282	LW 6	G 1/4	47,0	13,5
236 C	111283	LW 9	G 1/4	47,0	13,5
236 D	111284	LW 4	G 3/8	48,5	15,0
236 E	111285	LW 6	G 3/8	48,5	15,0
236 F	111286	LW 9	G 3/8	48,5	15,0
236 G	111287	LW 6	G 1/2	48,5	15,0
236 H	111288	LW 9	G 1/2	48,5	15,0
236 J	111289	LW 13	G 1/2	48,5	15,0



234 B

Sechskant-Überwurfmuttern

Artikel Nr.	Ident Nr.	Gewinde	für Tüllengröße	L1 mm	SW mm
234/0	111290	G 1/8	LW 4, LW 6	13,0	14
234 A	111291	G 1/4	LW 4, LW 6	15,0	17
234 A/S	111292	G 1/4	LW 9	15,0	17
234 B	111293	G 3/8	LW 4, LW 6, LW 9	15,0	19
234 C	111294	G 1/2	LW 6, LW 9	16,0	24
234 C/S	111295	G 1/2	LW 13	16,0	24
234 D	111296	G 1/4 links	LW 4, LW 6	15,0	17
234 E	111297	G 3/8 links	LW 4, LW 6, LW 9	15,0	19
234 F	111298	G 1/2 links	LW 13	20,5	24



252 H

Sechskant-Gegenmuttern

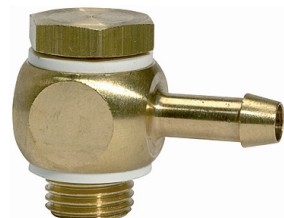
Artikel Nr.	Ident Nr.	Gewinde	L1 mm	SW mm
252 F	111299	G 1/8	3,5	15
252 G	111300	G 1/4	3,5	17
252 H	111301	G 3/8	4,5	19
252 J	111302	G 1/2	5,0	24
252 K/1	111303	G 3/4	5,0	32
252 K/2	111304	G 1	6,0	41
252 I	111305	G 1 1/4	8,5	50
252 O	111306	G 1 1/2	8,5	60
252 Q	111307	G 2	11,0	70
252 L	111308	M10x1,0	4,0	14
252 M	111309	M12x1,0	5,0	17
252 N	111310	M14x1,0	4,0	19
252 P	111311	M16x1,0	5,0	22
252 R	101241	M20x1,5	4,5	27
252 S	111312	M22x1,0	4,5	27
252 W	111313	M28x1,5	6,0	36



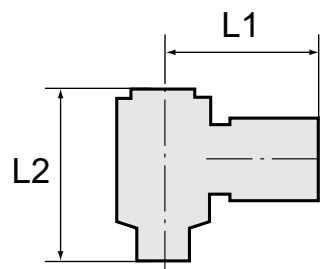
VK 203

Verschlusskappen (Sechskant-Ausführung)

Artikel Nr.	Ident Nr.	Gewinde	L1 mm	SW mm
VK 201	111314	G 1/8	10,0	13
VK 202	111315	G 1/4	10,0	16
VK 203	111316	G 3/8	10,0	19
VK 204	111317	G 1/2	12,0	23
VK 205	111318	G 3/4	14,0	29
VK 206	111319	G 1	15,0	36
VK 207	111320	G 1 1/4	17,0	46
VK 208	111321	G 1 1/2	19,5	53
VK 209	111322	G 2	19,5	64



74-046



Ringtülle:	Messing
Hohlschraube:	Messing vernickelt
Dichtringe:	PVC
Temperaturbereich:	-10 °C bis +70 °C
Arbeitsdruckbereich:	0,95 bis 15 bar
Gewinde:	Withworth-Rohrgewinde
Schlauchverbindung:	lösbar

Schwenktüllen, Außengewinde zylindrisch

Artikel Nr.	Ident Nr.	Gewinde	für Schlauch mm	L1 mm	L2 mm	SW mm
74-024	111323	G 1/8	LW 4	26,0	28,0	14
74-026	111324	G 1/8	LW 6	26,0	28,0	14
74-046	111325	G 1/4	LW 6	28,0	29,0	17
74-049	111326	G 1/4	LW 9	28,0	30,5	17
74-066	111327	G 3/8	LW 6	30,0	32,0	22
74-069	111328	G 3/8	LW 9	30,0	32,0	22