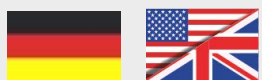


L-BOXX®

Produktdatenblatt
Product data sheet



L-BOXX 102





Allgemeine Daten

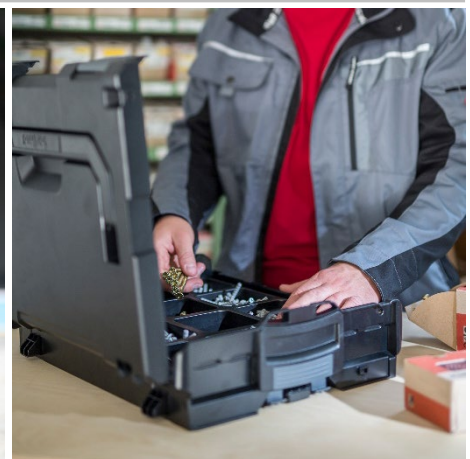
Bezeichnung	L-BOXX 102
Artikelnummer	6100000305
GTIN/EAN	4045294844554
Zolltarifnummer	39231090
Ursprungsland	Slowakei

Produktabbildung

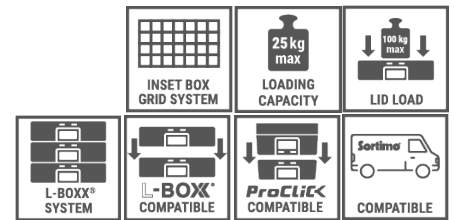


Produktbeschreibung

- Werkzeugkoffer aus Kunststoff für übersichtliches Aufbewahren und Schutz beim Transport
- Einzigartiges Mobilitätssystem
- Patentierte Klickverbindung
- Modularer Innenraum
- Ordentlich Aufbewahren
- Sicherer Transport
- Integration in die Fahrzeugeinrichtungssysteme namhafter Hersteller



Revision 5_08_2023

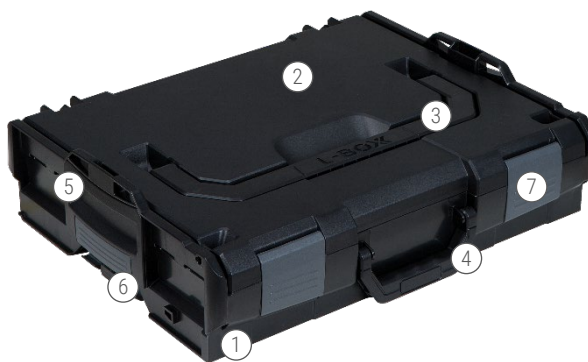


Farbe / Material

Farbe RAL 9017 Verkehrsschwarz
RAL 7016 Anthrazitgrau

Material

- L-BOXX Acrylnitril-Butadien-Styrol
 - Tragegriffe Acrylnitril-Butadien-Styrol
 - Griffschale Acrylnitril-Butadien-Styrol
-
- Koppelhebel Polyamid
 - Verschlusschnapper Polyamid



- 1 Korpus
- 2 Deckel
- 3 Tragegriff
- 4 Frontgriff
- 5 Griffschale
- 6 Koppelhebel
- 7 Verschlusschnapper

Technische Daten

Außenmaße

Breite	445 mm
Tiefe	358 mm
Höhe	118 mm

Innenmaße

Breite	378 mm
Tiefe	313 mm
Höhe	65 mm

Volumen	8,8 l
Eigengewicht	2,1 kg
Belastbarkeit Deckel	100 kg
Beladungskapazität	25 kg
Traglast Frontgriff	25 kg
Traglast Tragegriff	40 kg
Spritzwassergeschützt	ja
Temperaturbereich in C	-20°C bis +80°C
Kompatibel mit	<ul style="list-style-type: none"> ▪ L-BOXX System ▪ ProClick Tool Bag M ▪ ProClick Soft Bag M
Zertifikate	REACH-(EG 1907/2006)



General information

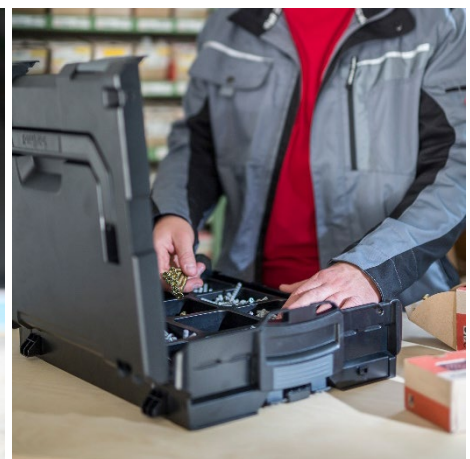
Product name	L-BOXX 102
Item no.	6100000305
GTIN/EAN	4045294844554
Customs tariff no.	39231090
Country of origin	Slowakia

Product image

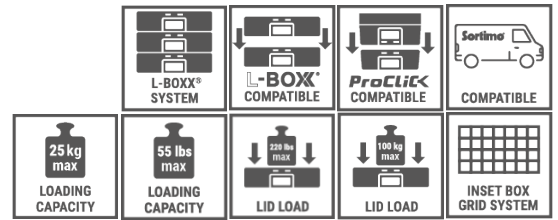


Characteristics

- Tool case made of plastic for clear storage and protection during transport
- Unique mobility system
- Patented click connection
- Modular interior
- Organized storage
- Safe transport
- Integration into the in-vehicle equipment systems of renowned manufacturers



Revision 5.08_2023



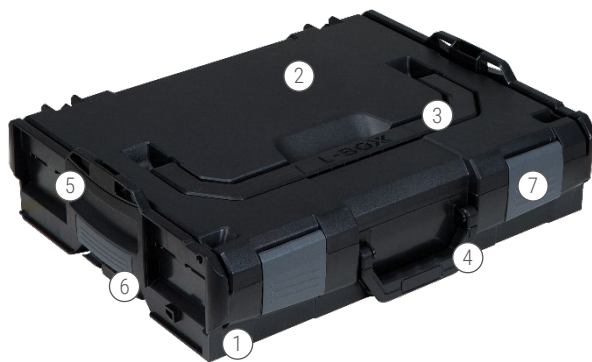
Colour / Material

Colour RAL 9017 traffic black
RAL 7016 anthracit grey

Material

- L-BOXX Acrylnitrile butadiene styrene
- Front handle Acrylnitrile butadiene styrene
- Top handle Acrylnitrile butadiene styrene
- Grip handle Acrylnitrile butadiene styrene

- Coupling latches Polyamide
- Locking latches Polyamide



- 1 Body
- 2 Lid
- 3 Top handle
- 4 Front handle
- 5 Grip handle
- 6 Coupling latches
- 7 Locking latches

Technical data

External dimensions

Width	445 mm	17.5"
Depth	358 mm	14.1"
Height	118 mm	4.6"

Internal dimensions

Width	378 mm	14.9"
Depth	313 mm	12.3"
Height	65 mm	2.6"

Volume	8.6 l	2.3 gal
Weight	2.5 kg	4.6 lbs
Load capacity lid up to	100 kg	220 lbs
Loading capacity max.	25 kg	55 lbs
Load capacity front handle	25 kg	55 lbs
Load capacity top handle	40 kg	88 lbs
Splash-proof	yes	
Temperature range in °C	-20°C till +80°C	
Temperature range in °F	-4°F till +176°F	
Compatible with	<ul style="list-style-type: none"> ▪ L-BOXX System ▪ ProClick Tool Bag M ▪ ProClick Soft Bag M 	
Certificates	REACH-(EG 1907/2006)	