

Operator name and signature: Rolf Ugilt *Rolf Ugilt*

Output:	3644 lm
Peak:	1498 cd
Lux@50cm:	5993 Lux
Power:	29,9 W
Power Factor / DF ϕ 1:	0,6
Standby power	0,6 W

Light efficacy:

122 Lumen/Watt

Light quality:

CRI: 82,0

Color temperature:

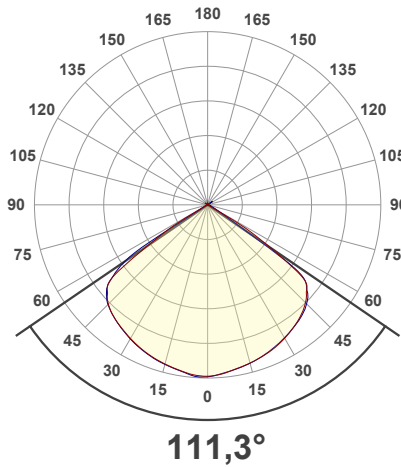
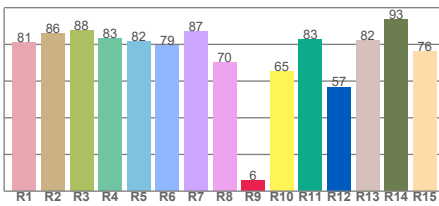
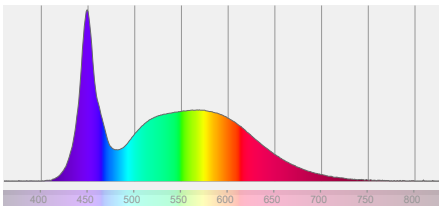
6513 K



According to regulation (EU) 2019/2015

Directionality:	Directional
Useful Lumen:	3601 lm
Energy Class:	D
η TM - Efficacy	142 lm/W

Spectra



Product name:

NOVA 3K C+R 100%

Item number:

03.5441

Date and time:

29-04-2021 10:50:58

Description:

Standby Power [W]: 0,6

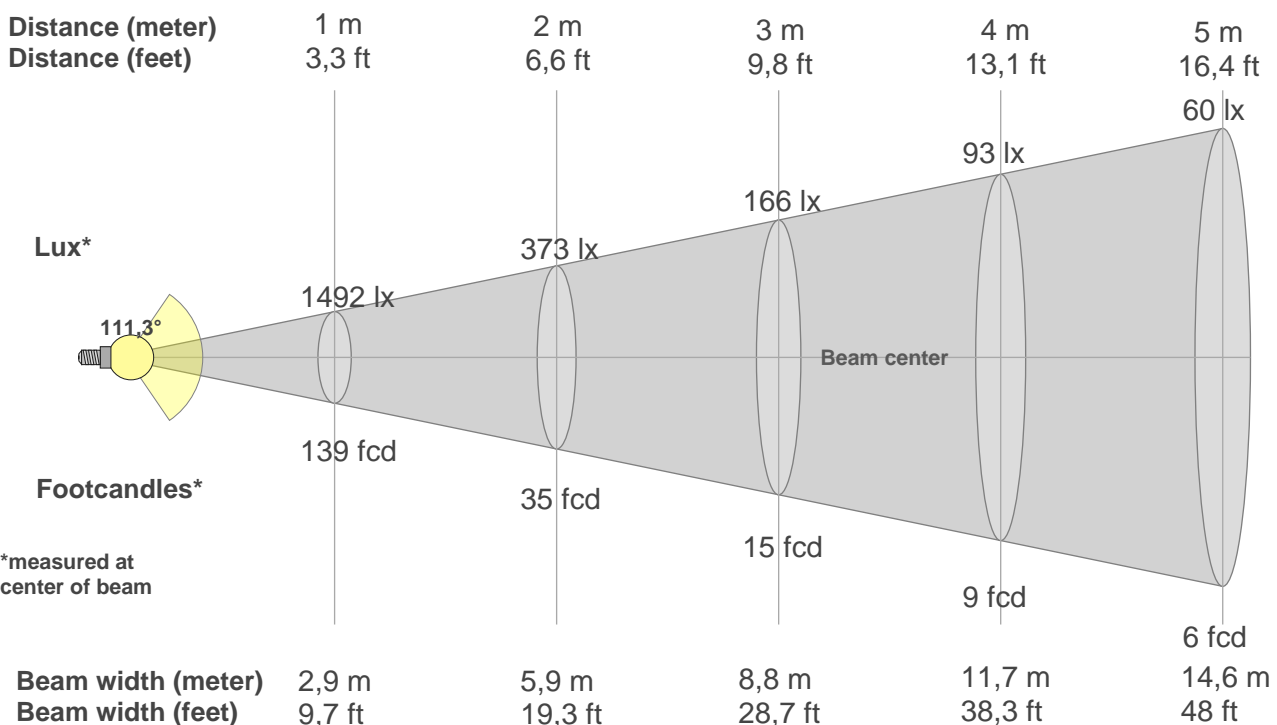
Sensor distance: 350cm

Warmup: <2% in 15 minutes

Power: Charger

BEAM DETAILS

Beam distance: 77,2 meters



Beam intensities from 1-20m

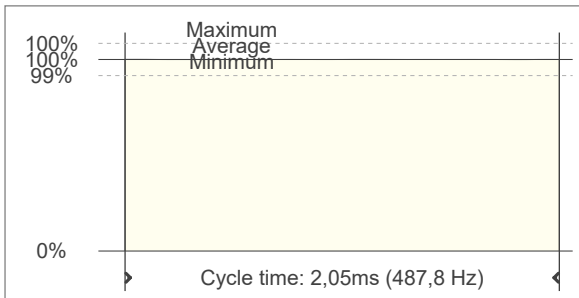
1m	2m	3m	4m	5m	6m	7m	8m	9m	10m	11m	12m	13m	14m	15m	16m	17m	18m	19m	20m
3,3ft	6,6ft	9,8ft	13,1ft	16,4ft	19,7ft	23ft	26,2ft	29,5ft	32,8ft	36,1ft	39,4ft	42,7ft	45,9ft	49,2ft	52,5ft	55,8ft	59,1ft	62,3ft	65,6ft
1492lx	373lx	166lx	93lx	60lx	41lx	30lx	23lx	18lx	15lx	12lx	10lx	9lx	8lx	7lx	6lx	5lx	5lx	4lx	4lx
138,6fc	34,6fcd	15,4fcd	8,7fcd	5,5fcd	3,8fcd	2,8fcd	2,2fcd	1,7fcd	1,4fcd	1,1fcd	1fcd	0,8fcd	0,7fcd	0,6fcd	0,5fcd	0,5fcd	0,4fcd	0,4fcd	0,3fcd

FLICKER DETAILS

Flicker curve (complete sampled flicker signal)



Flicker frame (frame of one flicker period)



Flicker frequency:	487,8 Hz
Flicker index:	0
Flicker percentage:	0,1 %
SVM: (Visual flicker)	0
Pst LM:	0,02
SDCM	6,3
Rated Color Temperature	6000 K
Duv	0,0026

WARMUP DETAILS according to EN 13032-1

